

Data Center Solutions

Featured Products

- ✓ Cam & Groove Fittings
- ✓ Sleeves & Ferrules
- ✓ Tri-Clamp Sanitary Fittings
- ✓ Maxi-Dry
- ✓ Grooved Pipe Coupling
- ✓ HoseMarc

Get in touch with our team to discuss solutions for Data Centers & Thermal Management.

For More Information
ptcoupling.com



COUPLINGS AND MORE

info@ptcoupling.com • 1-800-654-0320

Cam & Groove Fittings

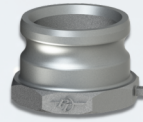
Standard Cam & Groove Products Include :

FEATURES:

- ✓ Variety of Materials Available Including Special Order
- ✓ Made in USA
- ✓ Reducer and Swivel Options
- ✓ Sizes 0.5" through 12" Available

Get in touch with our team to discuss PT's Cam & Groove Solutions or request a demonstration.

A-ADAPTER



B-COUPLER



STANDARD B-COUPLER

LONG B-COUPLER

C-COUPLER



D-COUPLER



E-ADAPTER



F-ADAPTER



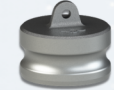
V-COUPLER



STANDARD V-COUPLER

VL-COUPLER

W-ADAPTER



View all
Cam &
Groove
Products



info@ptcoupling.com • 1-800-654-0320



Sleeves & Ferrules



FEATURES:

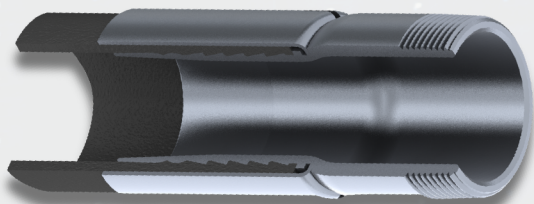
- ✓ Seamless Design
- ✓ Heavy Duty Option
- ✓ Made in USA
- ✓ Available in Stainless Steel, Aluminum & More
- ✓ Sleeves available in 0.5" - 8"
Ferrules available in 0.5" - 6"

Get in touch with our team to discuss Sleeve & Ferrule options for Data Centers.

Ferrule



Sleeve



Hose Assembly with Ferrule Cutaway

View all
ProGrip™
Sleeves &
Ferrules



info@ptcoupling.com • 1-800-654-0320



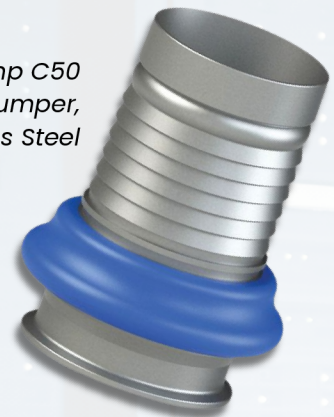
Tri-Clamp Sanitary Fittings

FEATURES:

- ✓ 304 or 316 Stainless Steel
- ✓ 3-A Compliant
- ✓ Made in USA
- ✓ Available with Optional Bumper
- ✓ Available in sizes 0.5" - 6"

Get in touch with our team to discuss Tri-Clamp Fittings, I-Line, Threaded and Sanitary-End Connections & Accessories for Data Centers.

*TCC50-Tri-Clamp C50
Stem with Bumper,
Stainless Steel*



*13MHMM-Tri-Clamp,
Clamp, Stainless
Steel*



*TCC50-Tri-Clamp
C50 Stem,
Stainless Steel*



View all
Tri-Clamp
Products



info@ptcoupling.com • 1-800-654-0320

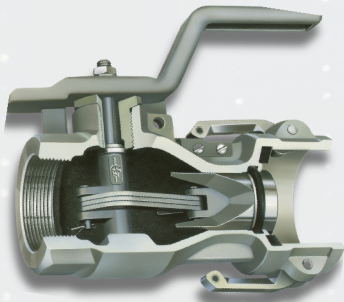


Maxi-Dry®

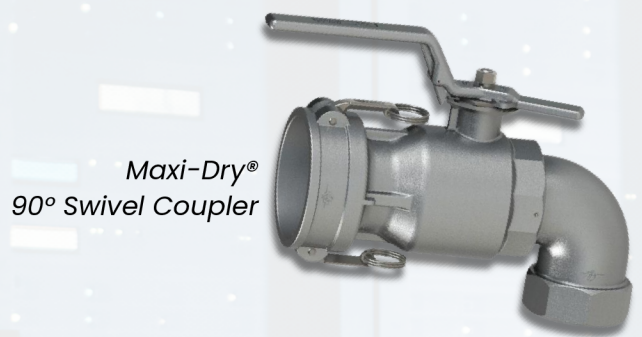
FEATURES:

- ✓ Sta-Lok II Cam Arms Available
- ✓ Male & Female cannot be disconnected while under pressure
- ✓ Made in USA
- ✓ All Internal Components are Stainless Steel
- ✓ Sizes 1.5" - 4" Available

Get in touch with our team to discuss Maxi-Dry® options for Data Centers.



Maxi-Dry® Coupler Cutaway



Maxi-Dry®
90° Swivel Coupler



Maxi-Dry® Adapter



Maxi-Dry® Adapter
X Pipe Flange

View
Maxi-Dry®
Products



info@ptcoupling.com • 1-800-654-0320

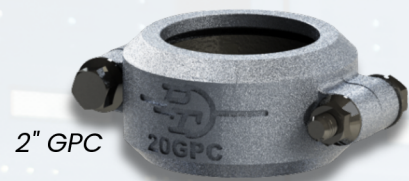


Grooved Pipe Coupling (GPC)

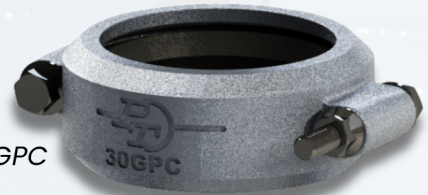
FEATURES:

- ✓ Integrated Stud Bolts
- ✓ Design Prolongs Life of Gasket by Allowing it Room to Expand
- ✓ Made in USA
- ✓ Designed for Install in Tight Spaces
- ✓ Sizes 2" - 4" Available

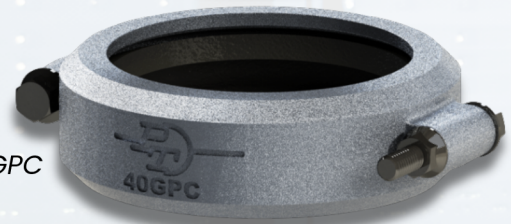
Get in touch with our team to discuss Grooved Pipe Couplings and their use in Data Centers.



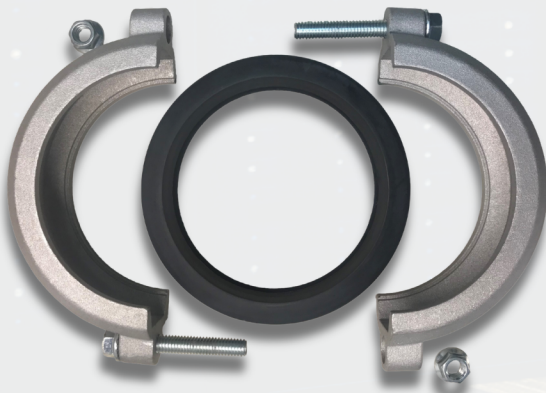
2" GPC



3" GPC



4" GPC



View
Grooved
Pipe
Couplings



info@ptcoupling.com • 1-800-654-0320



HoseMarc

FEATURES:

- ✓ Multiple Machine Options to fit Your Need
- ✓ Made in USA
- ✓ Designed to Provide Permanent, Compliant Hose Identification by Engraving Critical Data (Size, Serial #, PSI, etc.)
- ✓ Variety of Tag Sizes and Colors Available

Get in touch with our team to discuss PT's HoseMarc Products or request a demonstration.



HoseMarc Pro

HoseMarc Tags



HoseMarc Engraver



HoseMarc Pro Plus

See the
HoseMarc
in Action



info@ptcoupling.com • 1-800-654-0320

